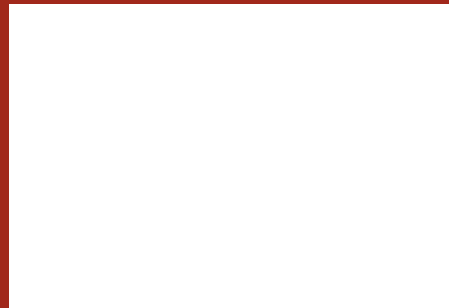


Visit Us Online

For more information about clay pavers, face brick, thin brick, fireplace products or installation instructions, visit us online at hcmuddox.com.

Offered by:



H.C. MUDDOX
4875 Bradshaw Road
Sacramento, CA 95827
800-776-1244

INTERSTATE BRICK
9780 South 5200 West
West Jordan, UT 84088
800-233-8654

www.hcmuddox.com
www.interstatebrick.com

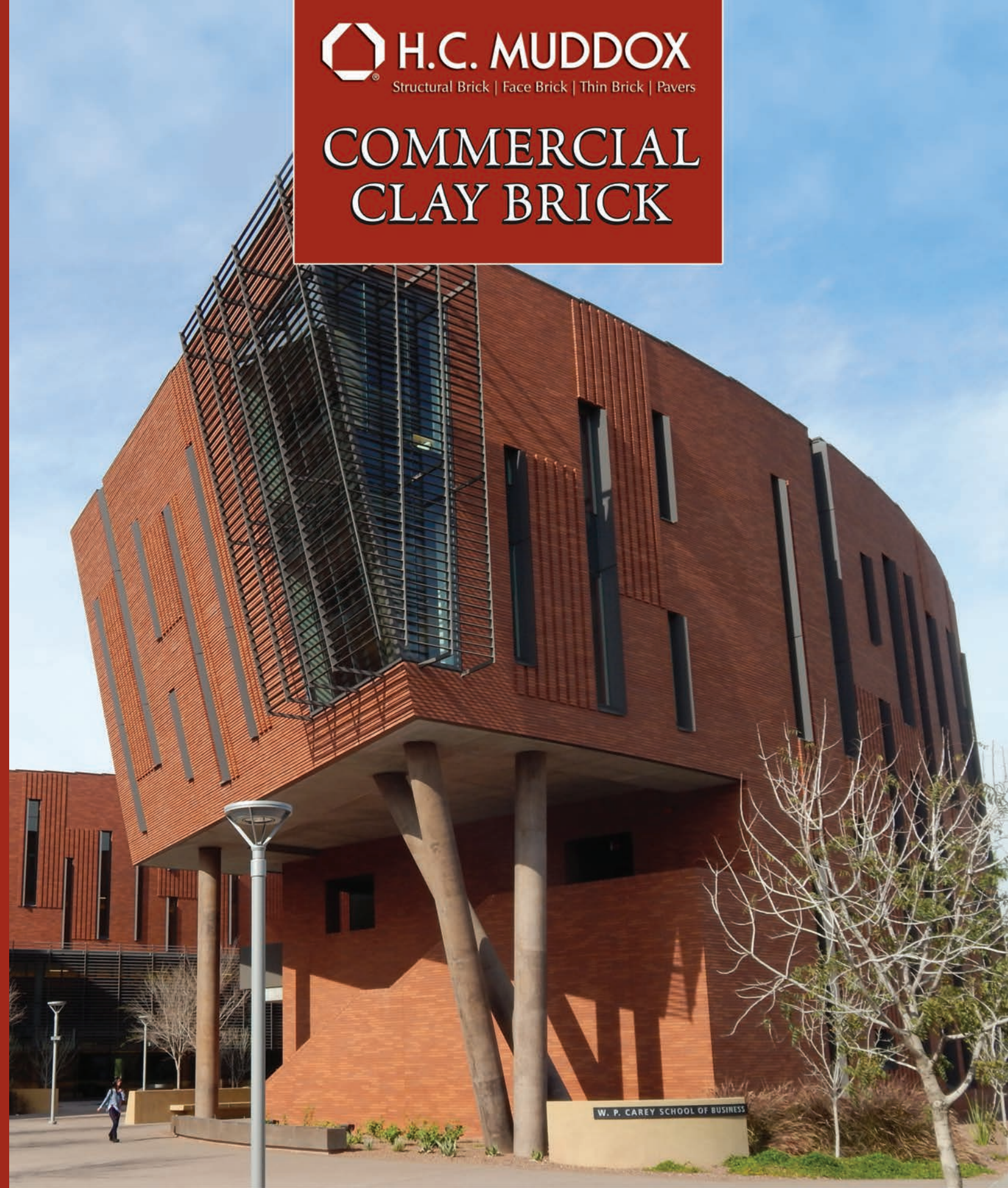


©2014 HC Muddox. All trademarks ® are registered trademarks.
The U.S. Green Building Council Member logo is a trademark owned by the U.S. Green Building Council and is used by permission.

HC002 OP 10,000 2/25/14

 **H.C. MUDDOX**
Structural Brick | Face Brick | Thin Brick | Pavers

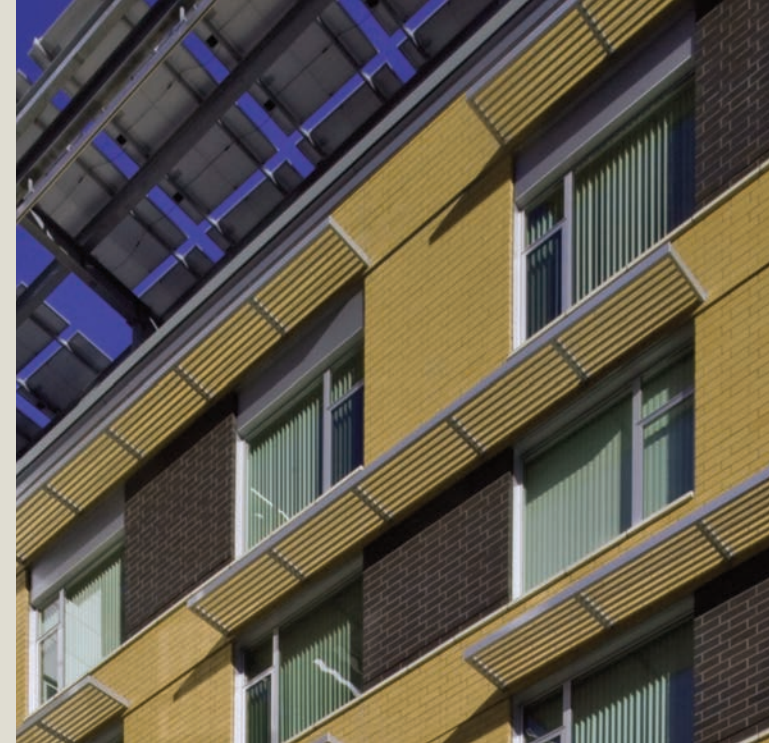
COMMERCIAL CLAY BRICK



www.hcmuddox.com



Project: 7th & H Street Housing Community
 Product: Jumbo Face Brick shown in Summer Wheat and Ebony



H.C. MUDDOX OUR APPROACH

SERVICE

Our long history and reputation is the result of working hand-in-hand with our customers every step of the way. If you have a question, we can answer it. If you need help, we can provide it. We are here to ensure a seamless and professional project from start to finish.

QUALITY

H.C. Muddox brick products are manufactured to exceptional aesthetic and physical qualities to withstand the forces of nature such as freeze-thaw, wind and earthquake. Our manufacturing process and quality control methods produce a beautiful and durable brick product that will enhance the beauty and appeal of any building.

PRODUCTS

Our product offerings include structural brick, face brick, thin brick, pavers, pool copings, flue liners and a variety of special shapes. The versatility of our product line and our expertise will guide you through the process of design, selection and application.

SUSTAINABILITY

H.C. Muddox brick products promote sustainable building practices through durability, low maintenance, better air quality, thermal comfort and energy efficiency. We practice responsible sourcing and manufacturing such as local sourcing, reclamation, recycling, use of natural gas, etc. just to name a few. When building with our brick you can be assured that you build for generations to come.

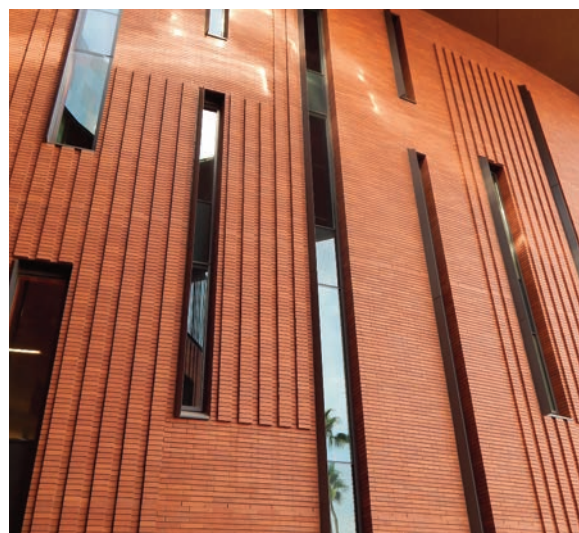
Cover Project: Arizona State University
 Product: Norman Smooth Face Brick shown in 50% Mission,
 30% California Rose and 20% Mountain Rose



Founded in 1878, H.C. Muddox has taken its vast, rich clay reserves and created some of California's most historic structures. This time-honored craftsmanship and expertise handed down from generations, combined with modern technology, has produced exceptional clay brick products that are durable, beautiful and timeless.

CONTENTS

INTRODUCTION	
Our Approach	2
FEATURED PROJECTS	
Arizona State University	3
UOP Technology Center	4
Cosumnes River College	5
San Joaquin County Hospital	6
Lincoln Crossing	7
Butte County Court House	8
Vacaville Intermodal	9
CSU Chico	10
STRUCTURAL BRICK	
Specifications	12
FACE BRICK	
Specifications	14
THIN BRICK	
Specifications	16
COLORS	
Structural, Face and Thin Brick	17
CLAY & BULLNOSE PAVERS	
Specifications	20
Colors	21



ARIZONA STATE UNIVERSITY MCCORD HALL TEMPE, ARIZONA

Special shapes and large size brick from H.C. Muddox was critical to create the modern design through unique angles and curves while the color blend harmonizes the surroundings of the campus.

PRODUCT: 3 x 2-1/2 x 11-1/2 Norman Smooth Face Brick
COLOR: Blend of Mission, California Rose and Mountain Rose
ARCHITECT: Kohn, Pedersen, Fox Associates and RSP Architects
LEED CERTIFICATION: LEED New Construction Gold
AWARDS: 2014 Red Award For Best Public Project

UOP JOHN T. CHAMBERS TECHNOLOGY CENTER STOCKTON, CALIFORNIA

The use of H.C. Muddox brick at the University of Pacific attributes to the durability and longevity of our brick and its ability to retain the brick motif of the campus.

PRODUCT: 3-5/8 x 2-1/4 x 7-5/8 Modular Smooth Face Brick
COLOR: Blend of Mission, Old Town Red and Mission Hills
ARCHITECT: Perkins + Will
LEED CERTIFICATION: LEED New Construction Gold





**MOUNTAIN VIEW
FIRE STATION
MOUNTAIN VIEW, CALIFORNIA**

The use of H.C. Muddox brick with a tower element helped the architect to create a look traditional to fire stations and design a sustainable building, all while making the staff feel at home in this essential facility.

- PRODUCT:** 3-5/8 x 2-1/4 x 7-5/8 Modular Face Brick
- COLOR:** Blend of Old Town Red, Mission and Monterey Bay Flash
- ARCHITECT:** BSA Architects
- LEED CERTIFICATION:** LEED New Construction Gold
- AWARDS:** F.I.E.R.O Honor Award for Design Excellence

**SAN JOAQUIN
COUNTY HOSPITAL
STOCKTON, CALIFORNIA**

The earth tone colors from the H.C. Muddox color pallet harmonizes with the agricultural area where San Joaquin County Hospital is located and the brick design in argyle and accent band patterns introduce architectural distinctiveness to the building.

- PRODUCT:** 3-5/8 x 2-1/4 x 7-5/8 and 3-5/8 x 2-1/2 x 11-1/2 Face Brick
- COLOR:** Tumbleweed and Frosted Almond
- ARCHITECT:** Marraccini and Patterson





LINCOLN CROSSING LINCOLN, CALIFORNIA

Situated at the entry-way to Downtown Lincoln this mixed-use project celebrates the historic old town aspect of the city while using modern brick application with H.C. Muddox thin brick. The three color brick blend helps to attain the historic look for this urban development.

PRODUCT: 1/2 x 2-1/2 x 8 Thin Brick

COLOR: Blend of Frosted Almond, Summer Wheat and Dusty Rose

ARCHITECT: RRM design



BUTTE COUNTY COURT HOUSE CHICO, CALIFORNIA

H.C. Muddox brick colors used in the new Butte County Courthouse reflects the rich and distinctive culture of Chico. Our ability to manufacture structural and face brick in the same colors was critical to the design of this modern courthouse that would make lasting contribution to this community. This building also features Terra Cotta from our sister company Gladding McBean.

PRODUCT: 3 x 2-1/2 x 11-1/2 Face Brick and 8 x 4 x 12 Structural Brick

COLOR: Frosted Almond and Mountain Rose

ARCHITECT: Tate Snyder Kinsey Architects



FPO
For Placement Only

FEATURED PROJECTS

FPO
For Placement Only



FEATURED PROJECTS



VACAVILLE INTERMODAL TRANSIT CENTER VACAVILLE, CALIFORNIA

H.C. Muddox true pavers over a flexible sand setting bed are used for pedestrian traffic at Vacaville Intermodal Transit Facility. The paver blend offers a vibrant and timeless walking surface for transit users with minimum maintenance for many years to come.

PRODUCT: 2-1/2 x 2-1/2 x 8 Paver
COLOR: Blend of Mountain Rose, Dusty Rose and Spanish Moss
ARCHITECT: Indigo Architects and Hammond and Playa Associates

CSU CHICO CHICO, CALIFORNIA

The architect designed the Student Housing at CSU Chico with face brick for the walls and pavers for the plaza in similar color range to complement the existing buildings in the campus. The consistent and ageless colors from H.C. Muddox help to celebrate the architectural theme of the oldest California State University.

PRODUCT: 3-5/8 x 2-1/4 x 11-5/8 Face Brick and 4 x 2-1/4 x 8 True Paver
COLOR: Face Brick shown in blend of Old Town Red, Mountain Rose and Ebony. Paver shown in blend of Old Town Red and Mountain Rose.
ARCHITECT: A C Martin



FPO
For Placement Only



FPO
For Placement Only

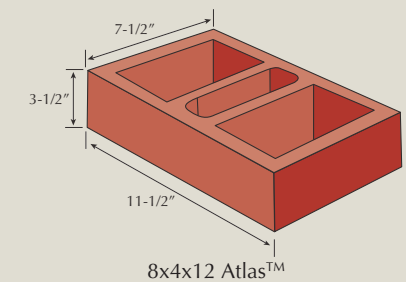
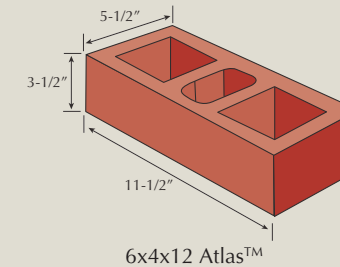
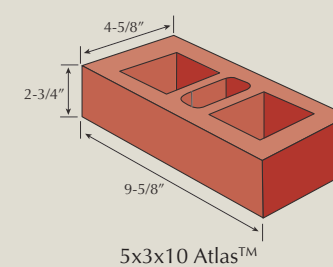
STRUCTURAL BRICK

STRUCTURAL BRICK

H.C. Muddox structural brick offer the natural aesthetics and load resisting capacities of brick walls. This brick is designed to be reinforced for excellent earthquake and wind resisting capacities and would help in achieving energy efficient buildings through thermal mass and resistance to water and air intrusion. Structural brick walls offer the highest fire ratings and sound transmission (STC) ratings along with low maintenance that is inherent to brick walls.

SPECIFICATIONS

H.C. Muddox Structural Brick meets or exceeds ASTM C-52 HBS SW or FBX.



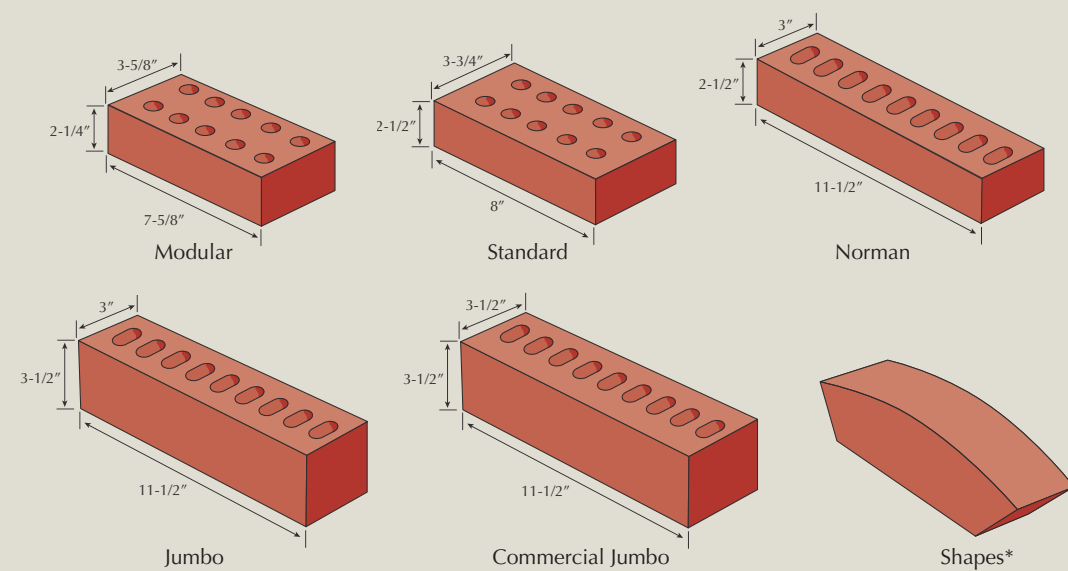


FACE BRICK

H.C. Muddox Face Brick offers a range of veneer brick options from modular to jumbo sizes in vibrant colors and textures. Buildings constructed with our face brick offer superior performance in energy efficiency, maintenance and moisture resistance. Proper design and detailing of rain screen brick veneer walls along with continuous insulation reduces thermal bridging and moisture infiltration to create long lasting energy efficient buildings.

SPECIFICATIONS

H.C. Muddox Face Brick meets or exceeds ASTM-216 FBS SW or FBX.
 *A variety of shapes are available please contact your H.C. Muddox representative.





FPO
For Placement Only

Project: Shops at Tralee, Dublin, CA
Product: Thin Brick shown in Folsom Gold and Monterey Bay Flashed Smooth



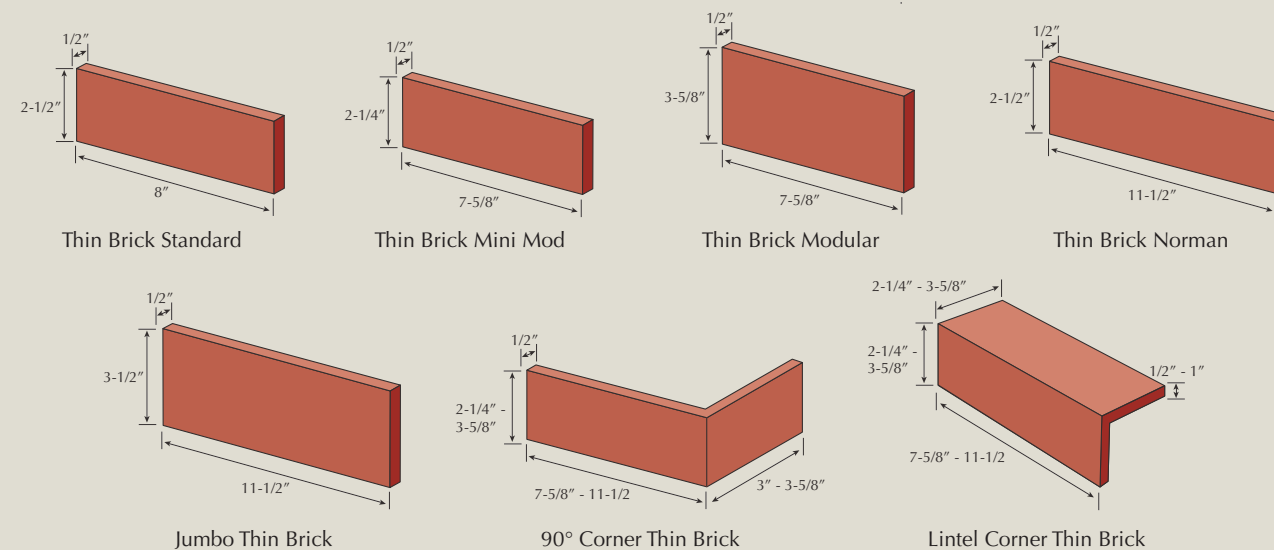
THIN BRICK

THIN BRICK

H.C. Muddox Thin Brick is a simplified and economical solution to designers and owners that want to achieve the aesthetics of brick, especially as a light weight brick option in high seismic areas. Thin brick offers qualities such as beauty, durability, and low maintenance that are inherent to the brick. Thin brick can be applied to many backup systems such as framed wall, GFRC, metal panels, CMU and concrete. Thin brick embedded in precast concrete is an effective solution for time sensitive project schedules. Thin brick is extensively used in a variety of interior applications such as stores, malls, restaurants and wine cellars.

SPECIFICATIONS

Thin brick thickness varies - 1/2" thickness for wirecut and 5/8" thickness for smooth textures.
H.C. Muddox Thin Brick meets or exceeds ASTM-C1088 Type TBS or TBX.



STRUCTURAL, FACE & THIN BRICK COLORS



Frosted Almond



Tule Fog



Dusty Rose



Sutter Gold



Tumbleweed



California Rose



Summer Wheat



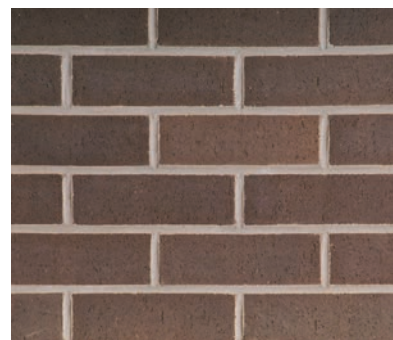
Spanish Moss



Mission Hills



Autumn Wheat



Sierra Slate



Ebony

STRUCTURAL, FACE & THIN BRICK COLORS



Mountain Rose



Bronze Ridge



Monterey Bay Flashed



Mission Common



Old Sacramento Blend



Iron Spot



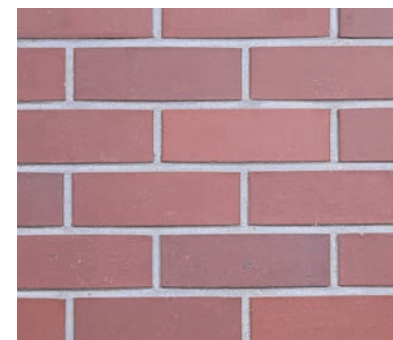
Old Town Red



Burnt Rose



Iron Mountain



Common Select



Railroad Blend



Carob

NOTE: Printed colors shown in this brochure may vary from actual product colors. We recommend selecting colors from actual product samples. Custom colors are available by special order - please contact your local dealer.

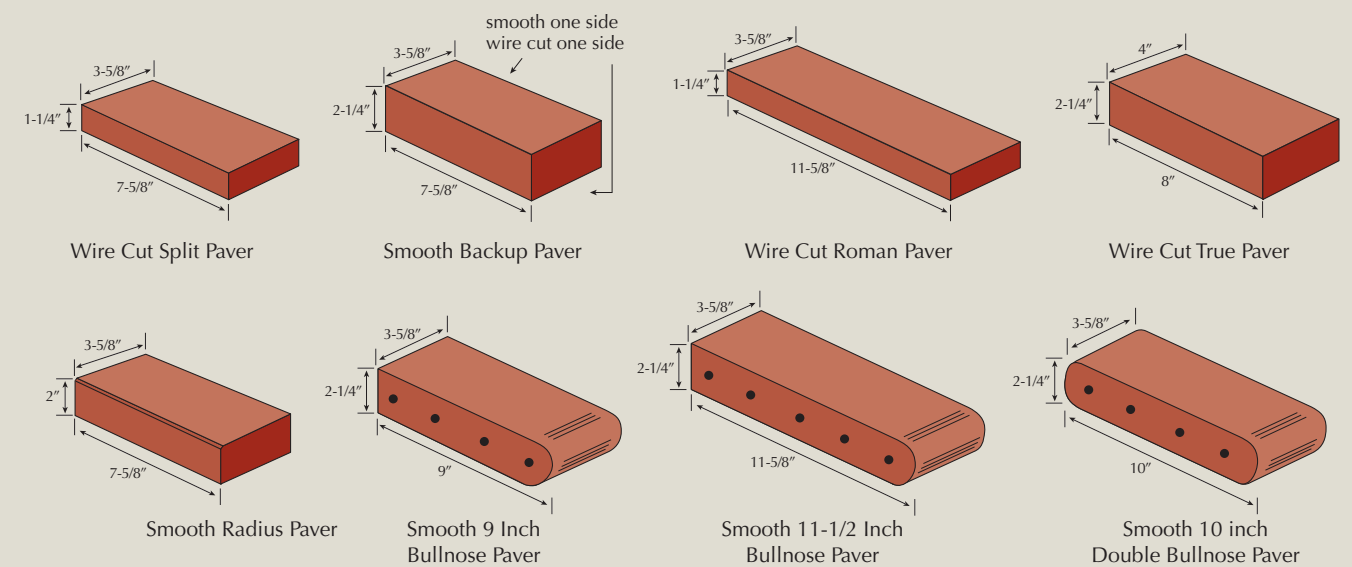


CLAY & BULLNOSE PAVERS

H.C. Muddox brick pavers offers a wide range of vibrant colors and sizes for pedestrian and vehicular traffic in both rigid and flexible base applications. No other paving material can match the durability and beauty of our pavers in driveways, patios, plazas and other landscaping applications. We offer bullnose pavers for pool edges, courtyard walls and stair treads.

SPECIFICATIONS

All of our pavers meet ASTM C902 MX Type I.



Project:
Product:

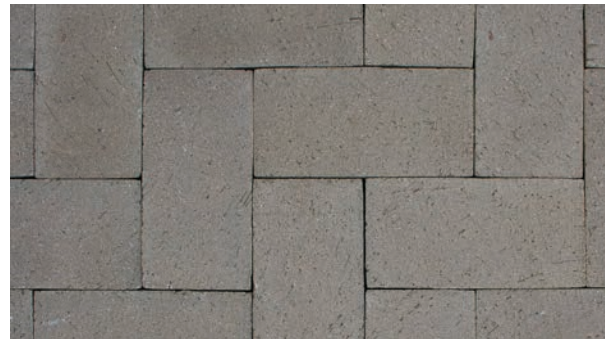
CLAY & BULLNOSE PAVER COLORS



Tumbleweed



Dusty Rose



Spanish Moss



Iron Mountain



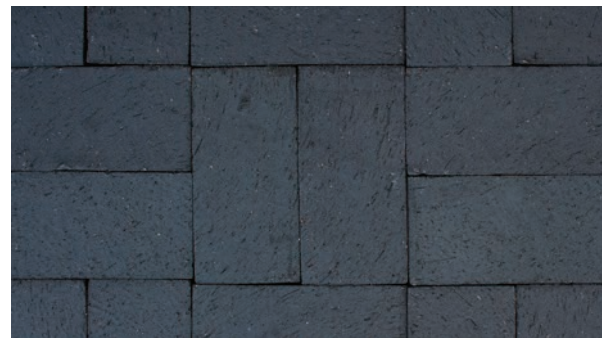
Summer Wheat



Bronze Ridge



Carob



Ebony

CLAY & BULLNOSE PAVER COLORS



Burnt Rose



Mission



Monterey Bay Flashed



Old Town Red



Mission Antique



Mountain Rose



Placer Antique

NOTE: Printed colors shown in this brochure may vary from actual product colors. We recommend selecting colors from actual product samples. Custom colors are available by special order - please contact your local dealer.